

prismA® – intelligent forecast, automatic scheduling

prismA® – the accurate forecast and scheduling system

The forecast and scheduling process of the prismA software system was developed by forseason in many years of work. Multivariate time series statistics processes and the latest probability calculation methods are employed. With self-adapting processes prismA is widely self-controlling and can learn from changes in sales figures.

Exceptions which the system signals can be handled manually. prismA is distinguished by a very high success rate. The positive results – high degree of supply reliability and goods availability, more exact estimation of the effect of promotional activities, reduction of reserve stock.

Reliable results, also in difficult cases

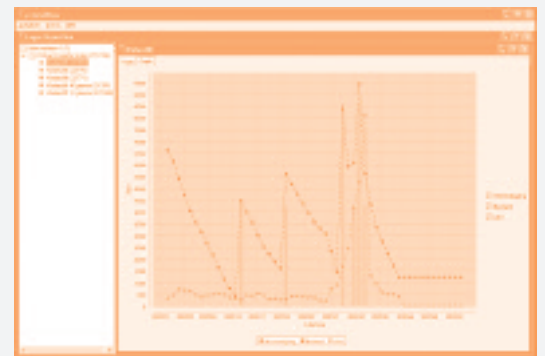
In practical applications newly introduced articles, fashion or seasonal items are difficult cases, as it is hardly possible to make use of data from the past. With assignment to reference and seasonal groups, prismA intelligently uses information which has been obtained from other articles and which can be effectively applied.

Individual, high performance and extremely user-friendly

With its modular structure prismA is an individually configurable system. The existing performance features are combined and extended depending on the requirements. prismA takes all important supplier and article-related features into account which are provided by the inventory management system. Automatic and costoptimized scheduling on the basis of exact demand forecasts is therefore possible.

prismA meets the highest demands with regard to data throughput. Systems currently in use achieve a throughput of four million article forecasts an hour. Daily scheduling is therefore also possible for articles with a critical sell-by date, such as fresh goods.

On the prismA interface the forecast and scheduling data are displayed both graphically and in a table. In addition to the comprehensive controlling reports the interface also provides options for influencing the scheduling parameters. prismA can be integrated into the familiar system environment by direct connection to an ERP/inventory management system.

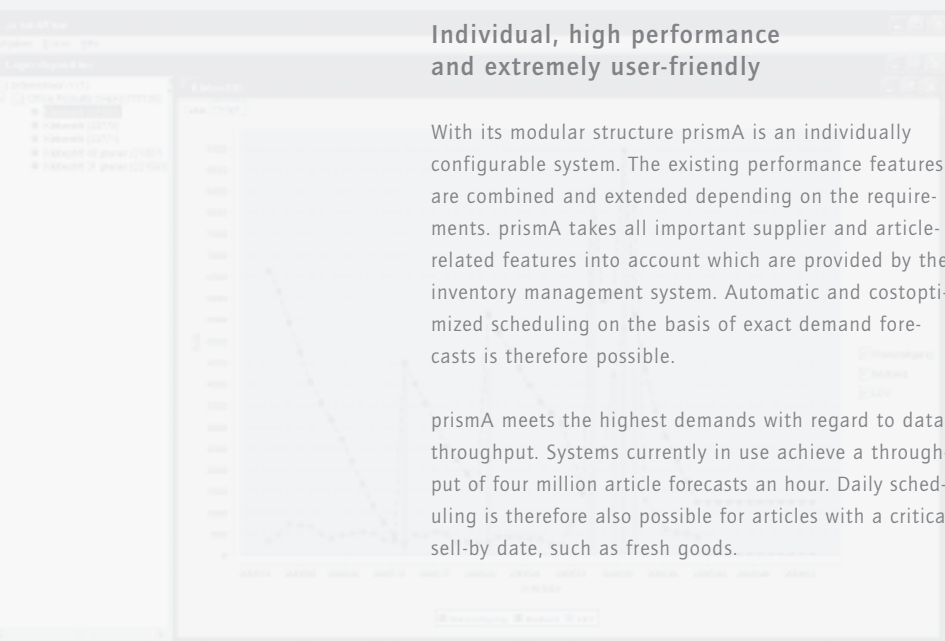


Simple integration into familiar user interfaces

Effective integration

prismA is installed either in the company headquarters or decentrally (in the branches) and is maintained and serviced with minimum input. The advantage of a central installation is the use of aggregated information and a high computer performance in the central computer. The connection of decentralized clients is naturally possible.

prismA has standard interfaces to common database systems (e.g. Oracle, Sybase, DB/2) on various server platforms (Unix, Linux, Windows 2000, Windows NT, VM/CMS). With the integration of prismA functions into the inventory management system, the forecasts and order suggestions are available immediately for processing.



high success rate | reliable results

modular structure | high data throughput

familiar user interface | effective integration



prisma® – modular design for individual solution

Powerful prisma® modules

The modular design of prisma with combinable and configurable performance features permits optimum adaptation to the individual user requirements. prisma comprises the modules:

- Forecasting
- Branch scheduling
- Warehouse scheduling

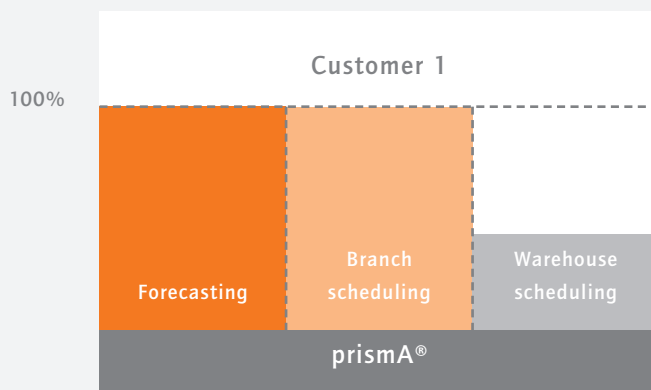


Diagram for customers with large number of branches

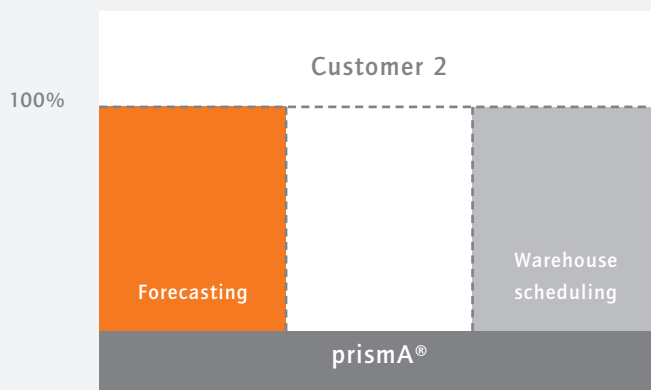


Diagram for customers without branches

Performance features for special tasks

Free configuration of the prisma performance features permits maximum demand orientation and therefore the best solutions. The following performance features are offered:

- Analysis and forecast of the additional requirements in the promotional periods
- Free seasonal groups for the identification and grouping of articles with the same seasonal behavior
- Free groups for public holidays for the combination of articles with the same public holiday influence
- Referencing for the improvement of forecasts for newly introduced articles with reference articles
- Branch comparison for the improvement of forecasts by the identification of similar sales points
- Parts list processing for ordering articles of several components
- Shortage detector identifies stock shortages even in the event of restriction of the inventory management system
- Order optimization for the determination of optimized orders of various ordering options
- Control of the degree of scheduling automation with the assignment of a quality indicator
- Inclusion of stock and capital tie-up costs
- Variable condition assessment

Please call us – we would be pleased to provide further information.

forseason gmbh
forecasting | scheduling
marktstrasse 10
88212 ravensburg

tel: +49_751_764 30_00
fax: +49_751_764 30_29
info@forseason.de
www.forseason.de